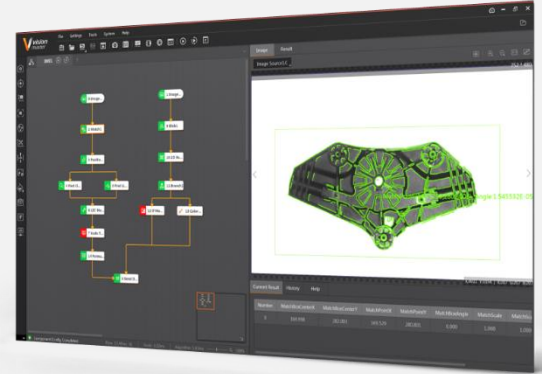


iMVS-VMINTL-7*00

VM Algorithm Development Platform - Traditional & AI Full Function

The VM algorithm development platform is a machine vision software independently developed by HIKROBOT, which is committed to providing customers with algorithm tools to quickly solve vision applications, which can meet machine vision applications such as visual locating, dimensional measurement, defect detection, and information recognition.



Features :

- It is composed of nearly 1,000 completely self-developed image processing operators and a variety of interactive development tools, including 150+ module tools, supporting a variety of operating systems and image acquisition hardware devices, which can meet the needs of locating, measurement, recognition, and detection in machine vision applications.
- Fully graphical interactive interface, intuitive and easy-to-understand function icons, drag-and-drop operation can quickly set up a visual scheme, and the operation status of the module is independently identified and displayed in real time.
- Users can create visual solutions according to their needs, and can also customize the operation interface, and integrate background images or company logos on the operation interface to meet the personalized needs of customers.
- Compatible with GigE Vision and USB3 Vision protocol standards, it can be connected to a variety of camera brands. Supports local image and camera real-time image processing.
- It supports common industrial communication protocols such as TCP/IP, ModBus, serial port, UDP, Ethernet/IP, etc., and is compatible with the communication of mainstream PLC models.

Application Industry:

3C, Automobile, Logistics, New Energy, Medicine, etc.



Order Model:

4CH camera, upgraded dongle: iMVS-VMINTL-7200

There is no limit to the number of camera channels, upgraded dongle: iMVS-VMINTL-7200-PRO

Technical Parameters

| Model | | iMVS-VMINTL-7200 | iMVS-VMINTL-7200-PRO |
|---------------------------|--|--|----------------------|
| | | VM Algorithm Development Platform - Traditional & AI Full Function | |
| Parameter | | | |
| Competency set | | | |
| Functional categories | | Acquisition, Locating, Image Generation, Measurement, Recognition, Calibration, Deep learning, Calculation, Image Processing , Split Combination, Color Processing, Defect Detection, Logic Tools, Communication | |
| Number of processes | | Unlimited | |
| Correspondence management | | Unlimited | |
| Number of camera channels | | 4 | Unlimited |
| Duration of use | | Unlimited | |
| Platform | | | |
| Operating system | | Windows 10 (64-bit operating system, based on x64 processor) | |
| Encrypt | | | |
| Encryption | | Dongle | |
| Shared encryption | | VM 4.0 and later versions are supported | |
| Privatized encryption | | VM 4.2 and later versions are supported | |

HIKROBOT

Hangzhou Hikrobot Co., Ltd.
en.hikrobotics.com

© Hangzhou Hikrobot Co., Ltd. All Rights Reserved.

Hangzhou Hikrobot does not tolerate any infringement. Any organization or individual may not imitate or reproduce in whole or in part of the content. The data herein is based on Hikrobot's internal evaluation. Actual data may vary depending on specific configuration and operating condition. The information herein is subject to change without notice. All the content has been checked conscientiously. Nevertheless, Hikrobot shall not be liable to damages resulting from errors, inconsistencies or omissions.